

LED Retrofit Price Signs



Price is the number one reason consumers choose one gas station over another. If your sign isn't accurate, or customers can't read it - **you're missing out on fuel sales.**

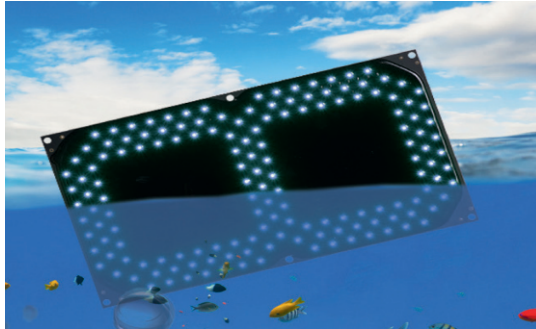
A Truly Superior Solution

From unmatched brightness control to superior energy efficiency, we strive to build the country's best gas price signs

Design to be **BOLD**. Technology to **LAST**.

Make Your Price Signs Look New Again:

Whether you're tired of manual signs or looking to update your existing, faded, LED boards, replace your existing LED panels or manual price digits, be bold improving curb appeal and your brand image.



Features

- IP67-protected technology
- Automatic brightness control in 256 steps
- Minimal power consumption
- Long service life
- Modular structure
- Integrated temperature control
- High temperature and weather resistance
- Good legibility
- Ultra-flat design
- Different colours: white, red, green
- Viewing angle up to 120°*
- Replacement of individual digits possible

Applications

Replace outdated manual price digits or existing LED digits that are faded or illegible.

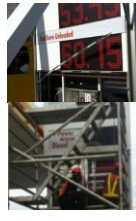
Add new and additional commodity to existing signs (i.e.e fuels and additional fuel grades).

Retrofit panels easily drop-in or bolt onto your existing sign structure, reducing up-front costs.

It's as easy as that!



Manual price digits



Retrofit works



LED PCU

LED Retrofit Panels Sizes Single Product , Single Face	PCU with 4 digits and 1 decimal point per line		
	Digit Height	Dimensions	Row of LED per digit
	150mm	245 x 670 x 7mm	2 rows
175mm	282 x 770 x 7mm	2 rows	
200mm	282 x 770 x 7mm	2 rows	
250mm	320 x 850 x 7mm	2 rows	
300mm	393 x 990 x 7mm	2 rows	
400mm	489 x 1232 x 7mm	3 rows	
PCU with 4-5 digits and 1 decimal point per line			
Digit Height	Dimensions	Row of LED per digit	
300mm	393 x 1040 x 7mm	3 rows	
400mm	493 x 1267 x 7mm	3 rows	

Standard color LEDs available in red, green and white.
Additional custom colors available by request.

You can find our products "almost" everywhere..



CUSTOMERS WORLDWIDE



Address: Metrogate Unit 18 Garnet Bldg. Sampaloc 1, Dasmariñas, Cavite

Email: ivy.tada@gmail.com

Contact No.: 0943 134-3466

Makes you think of everything when refueling.

Except of light.

The outdoor lighting system

Under Canopy Lighting

Features

- Compact ,easy to install design
- Smooth and uniform light
- Tool-free high transmission lens option
- High efficiency lens eliminates glare and improves visual comfort
- Recessed mounting comes with support brackets
- Osram LEDs High Brightness
- 14,500 lm (LED 112)
- 100 watts
- 100,000 operational hours
- -10 to 45 Celsius
- Aluminum Material Powder Coated
- Modular Heat Sink Design
- 90 degree Vertical and Horizontal



“Industry's Superior Solution, designed to help you win in competitive markets and built to last for years.”

Our Services

Offering Package Services ranging from Design, Fabrication, Engineering, Project Management, After-sale Service to Material Trade.

Design standards

- VI Manual
- Technical Standard
- Installation Manual
- Maintenance/Repair Manual

- ✓ Supply and Installation
- ✓ Repair and Maintenance
- ✓ Redesign/Retrofit Works
- ✓ Product Image

Other products

Gondola Shelves
Double Sided



Customer Service Unit

Gondola Shelves
Single Sided



Modular Display Unit

Gondola Shelves
Wall Mounted



Display Rack

Advertising Trash Bin



Squeegee and Holder



Movable Lube Rack



Movable Lube Rack



Sand box



Approach sign

